

NEW STUDIO APARTMENT FOR RENT - BEVERLY PALACE

Rental Monaco

3 900 € / month

STUDIO WITH PRIVATE GARDEN, CLOSE TO PUBLIC ELEVATORS WITH QUICK ACCESS TO THE PORT OF MONACO AND THE FONTVIEILLE DISTRICT.

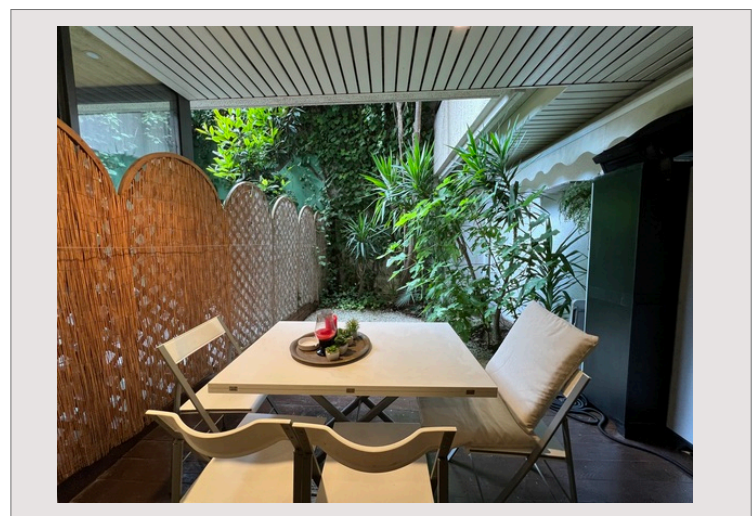
Product type	Apartment	Rooms	1
Total area	41 m ²	Cellars	1
Living area	24 m ²	Building	Beverly Palace bloc A
Garden area	17 m ²	District	Moneghetti
View	GARDEN	Exposition	SOUTH - WEST
Floor	REZ DE JARDIN	Release date	01/01/2026
Usage mixte	Oui		

In a good standing building with concierge service, we offer you this pretty studio with private garden, located in the MONEGHETTI district.

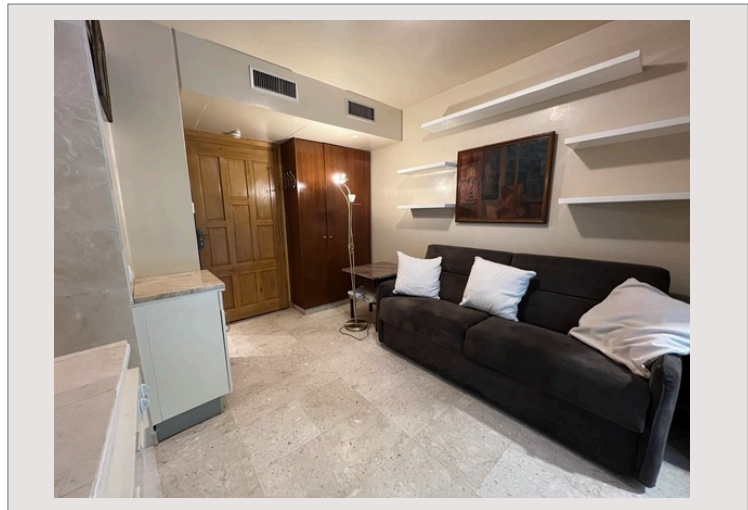
The property has a double entrance door, one of which is armored which allows the apartment to be soundproofed, a sofa bed, a large bathroom with bathtub, washing machine, dishwasher, reversible air conditioning, armored electric blinds.

A cellar completes this property.

Possibility to rent in mixed use.



NEW STUDIO APARTMENT FOR RENT - BEVERLY PALACE



NEW STUDIO APARTMENT FOR RENT - BEVERLY PALACE

